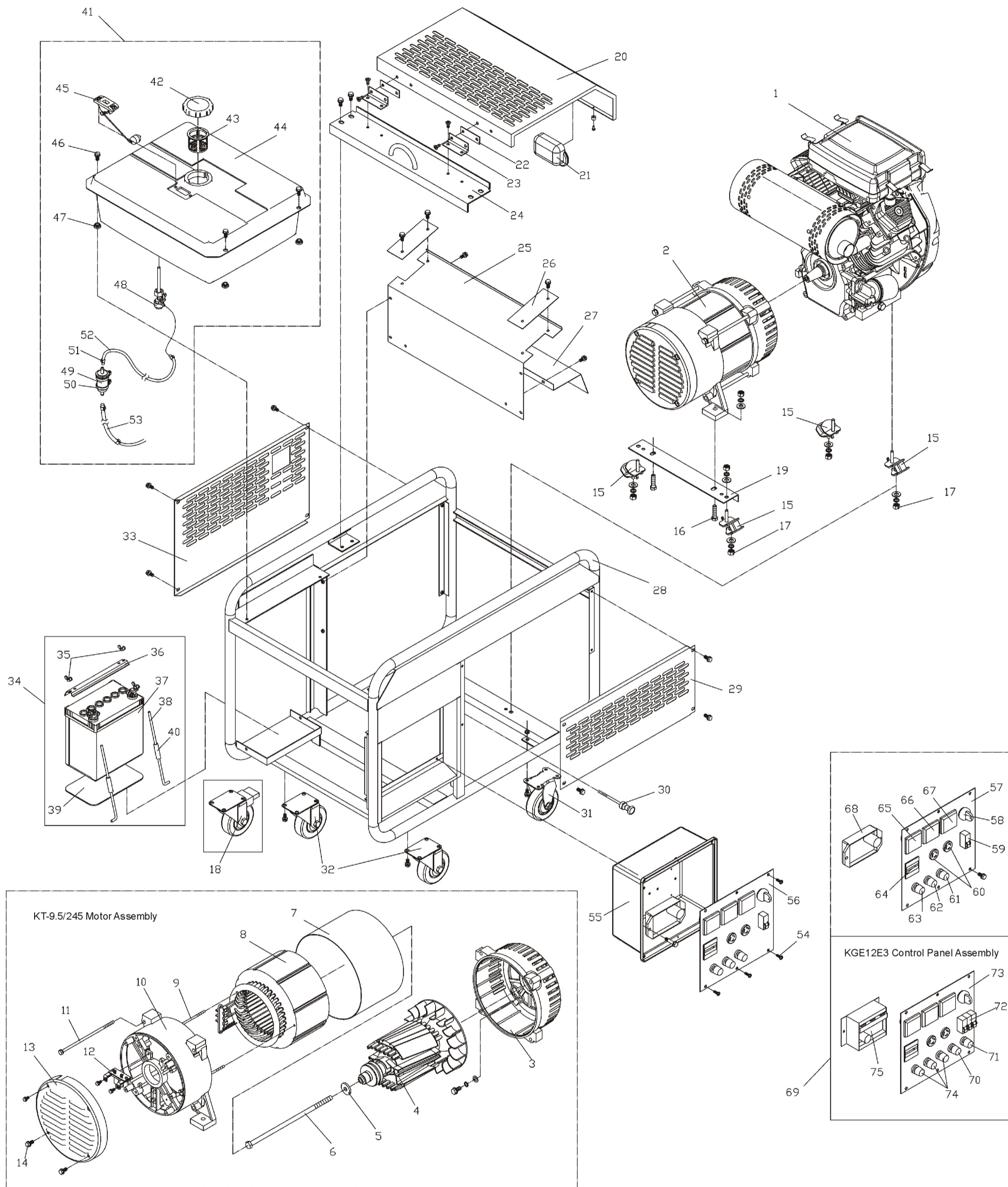


ASSEMBLY AND PARTS ALBUM

KGE12E/E3



No.	Code.	Description	Qty.	No.	Code.	Description	Qty.	No.	Code.	Description	Qty.	No.	Code.	Description	Qty.
1	KGE12E-01000	KG690 Generator	1	21	KGE12E-08001	Manual-pulling Cover	1	41	KGE12E-11000	Fuel System	1	61	M8	Output Wiring Terminal (Grounding)	1
2	KGE12E-02000	KT-9.5/245 Motor Assembly	1	22	KGE12E-08103	Damping Plate	2	42	KGE2500X-11200	Fuel Tank Cover Unit	1	62	M8	Output Wiring Terminal (Cathode)	1
3	KT-245-00002	Front Cover	1	23	KGE12E-08300	Hinge	2	43	KGE2500X-11300	Filter Screen	1	63	M8	Output Wiring Terminal (Anode)	1
4	KT-245-01000	Rotor Assembly	1	24	KGE12E-08200	Supporting Beam of Top Cover Weldment Assem	1	44	KDE12E-11100	Fuel Tank Weldment	1	64	891-331	Timer	1
5	KT-245-00005	Washer	1	25	KGE12E-03010	Air Deflector Weldment	1	45	KDE12E-11200	Oil dipstick Unit	1	65	220V 45-55HZ	Frequency Meter	1
6	KT-245-00006	Bolt M10×320	1	26	KGE12E-03003	Air Deflector A	2	46	GB/T5789-1986	Bolt M6x25	4	66	0-300V	Voltmeter	1
7	KT-245-00004	Protecting Plate	1	27	KGE12E-03004	Air Deflector B	1	47	KGE2500X-11002	Damping Plate	4	67	0-20A	Ampere Meter	1
8	KT-245-02000	Stator Assembly	1	28	KGE12E-03100	Generator Frame Weldment	1	48	KGE2500Xi-11500	Oil switch Unit	1	68	AVR	AVR (Single-phase)	1
9	KT-245-00009	Bolt	2	29	KGE12E-03001	Protector A	2	49	191 201 511A	Fuel Filter	1	69	KGE12E3-13100	Control Panel Assembly (Three-phase)	1
10	KT-245-00001	Rear Cover	1	30	KGE12E-14000	Throttle Control Device	1	50	KG670-14005	Clip	2	70	M8	Output Wiring Terminal (Neutral Line)	1
11	KT-245-00003	Bolt M10×180	4	31	4"	Position Wheel	2	51	KGE5500X-11003	Fuel Tank Clip	4	71	M8	Output Wiring Terminal (Grounding)	1
12	KT-245-03000	Carbon Brush Assembly	1	32	4"	Movable Wheel	2	52	KGE12E-11001	Fuel Pipe	1	72	DZ47-63 C10	Air Switch	1
13	KT-245-00008	Rear Cover of Motor	1	33	KGE12E-03002	Protector B	1	53	KGE12E-11002	Fuel Pipe	1	73	KGE12E3-13110	Control Panel	1
14	GB5781-86	Bolt M5×12	1	34	KGE12E-17000	Battery And its mounting Assem	1	54	GB818-1985	Screw M5x12	6	74	M8	Output Wiring Terminal (Three-phase Output)	3
15	KDE3500X-01000	1# Damping Plate	4	35	GB/T62-88	Wing Nut	2	55	KGE12E-09000	Rear Cover of Control Panel	1	75	AVR15-3A	AVR (Three-phase)	1
16	GB/T5783-2000	Bolt M10×45	2	36	KDE5000T-03003	Battery Pressure Plate	1	56	KGE12E-13100	Control Panel Assembly	1				
17	GB/T41-2000	Nut M8	10	37	36AH	Battery	1	57	KGE12E-13110	Control Panel	1				
18	4"	Moveable Wheel (with Brake Function)	2	38	KDE5000T-03002	Battery Pull-rod	2	58	JK425	Starting Key	1				
19	KGE12E-03004	Supporting Plate of Motor	1	39	KDE5000T-03018	Washer	1	59	DZ47-63	Air Switch	1				
20	KGE12E-08100	Top Cover Plate	1	40	KDE5000T-03019	Rubber Sheath	2	60	25A 250V	Receptacle	2				

KIPOR POWER CO., LTD.

11/F Suntime International Mansion, 450 Fushan Road, Pudong, Shanghai, China
 TEL: 86-21-58208881 FAX: 86-21-58208877